

## TUBULAR FURNACES for LABORATORY

### « Customized » realisation on request



For more than 35 years we manufacture tube furnaces for industry and research laboratories. Made of a resistant wire (Fe / Cr / Al alloy), a tubular refractory support (silimantite or alumina), a stainless steel frame and ceramic wool insulation, our ovens are the most robust and the most durable on the market.

Our expertise and the reliability of our products are recognized by technicians and researchers from CEA, CNRS, Universities and industry laboratories.

#### Why order from us?

Instead of having to develop your projects based on catalogue products, you can have the product exactly suited to your needs, and for a comparable cost and time to those of standard manufacture.

## TECHNICAL CHARACTERISTICS

### VOLUME:

The maximum inside volume is about 5 to 7 litres.

### DIMENSIONS:

Practically any dimension for the internal diameter are possible, to 200 mm.

The external diameter is defined with the following sizes: Ø 50 / 100 / 150 / 200 / 250 mm.

Other shapes for the external steel sheet (square or rectangular...) are possible, with any dimension.

Maximum length to 1.2 meter.

### ASSEMBLING:

Different means for fixation and assembly are possible:

- by rods, screwed or smooth, on the side
- By a plate with rubber supports
- By integration in an analytical tool
- And so on

### RESISTANCE:

Under conditions, the resistant wire winding can be made with variable steps, or with different heating zones, so as to obtain particulate profile temperature

According to dimensions and max temperature, the main voltage is: 220 / 110 / 48 / 24 VAC.

### TEMPERATURE MEASUREMENT:

Each furnace is equipped with a tube to insert the thermocouple.

### TEMPERATURE REGULATION:

- By temperature regulator with digital display, self-adaptive PID type, with rising slope and output power under 220 V: 1300 or 2600 VA
- Or by any other mean on request

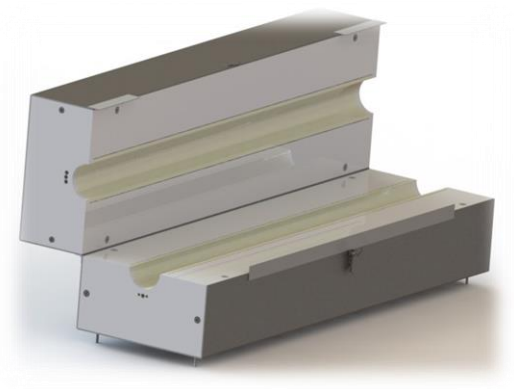
### DIFFERENT REALIZATION :

Our mastery on this technology allow us to propose more variety of furnaces:

- Furnaces with several parallel tubes,
- Furnaces with different shapes (square, rectangular, half circular...)
- Furnaces «well» type
- Opening furnaces (under conditions),
- Extremities with accessories (ventilation, gas input, ...),
- Protection grid or furnace sides cooling by water circulation,

Our furnaces can be combined with gas lines, valves, and various regulations (contact us for more information).

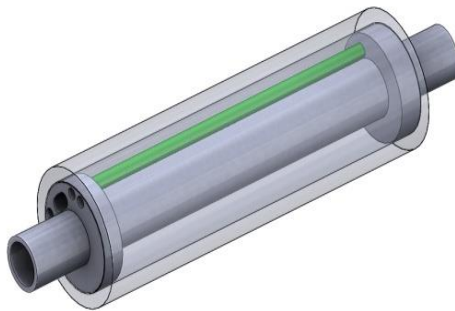
## DIFFERENTS FURNACES



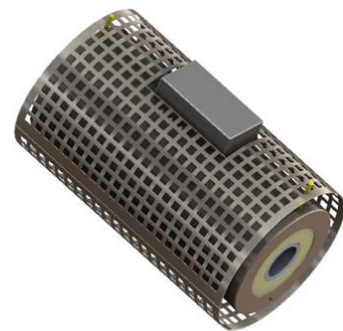
*Opening Furnaces*



*Oven with reactor and cooling system*



*Oven with special insulation*



*Tubular furnace with protection grid*



*Tubular furnace « well »*



We made also :



***Wickbold / Sulfur***

ASTM D2784 / ASTM D2785 -  
AFNOR M41-009 / ISO 4260 -  
IP243 / DIN 51408 NF.EN  
24260 / EN41



***Sulfur Analyzer***

ASTM D5453 / ASTM D6667 /  
ASTM D 7183 / ISO 20 846 NF  
M0759



***Chlorine Analyzer***

AOX - Pox - Eox according to  
ISO 9562



***Nitrogen Analyzer***

ASTM D4629 / ASTM D6069 /  
ASTM D5176 / ASTM D7184 /  
NF EN 12260 / NF M 07-058



***Tri-four pyrolysis for***

Tritium, Carbon 14, Chlorine 36,  
Iodine 129

**ERALY & Associés**  
4 Rue Georges Besse – Bât I  
78330 FONTENAY-LE-FLEURY – France  
Tel : +33(0)1 77 04 80 97  
Fax : +33(0)1 77 04 80 96  
[www.eraly.com](http://www.eraly.com)