



## Refinery gas analyzers

### Instrument:

GC C9000, 3xTCD, 4xValves, Packed columns

### Sample:

Gaseous or Liquefied refinery gas and similar streams

### Analytes:

C1 – C6+, O<sub>2</sub>, N<sub>2</sub>, CO, CO<sub>2</sub>, H<sub>2</sub>, He, H<sub>2</sub>S

### Test methods:

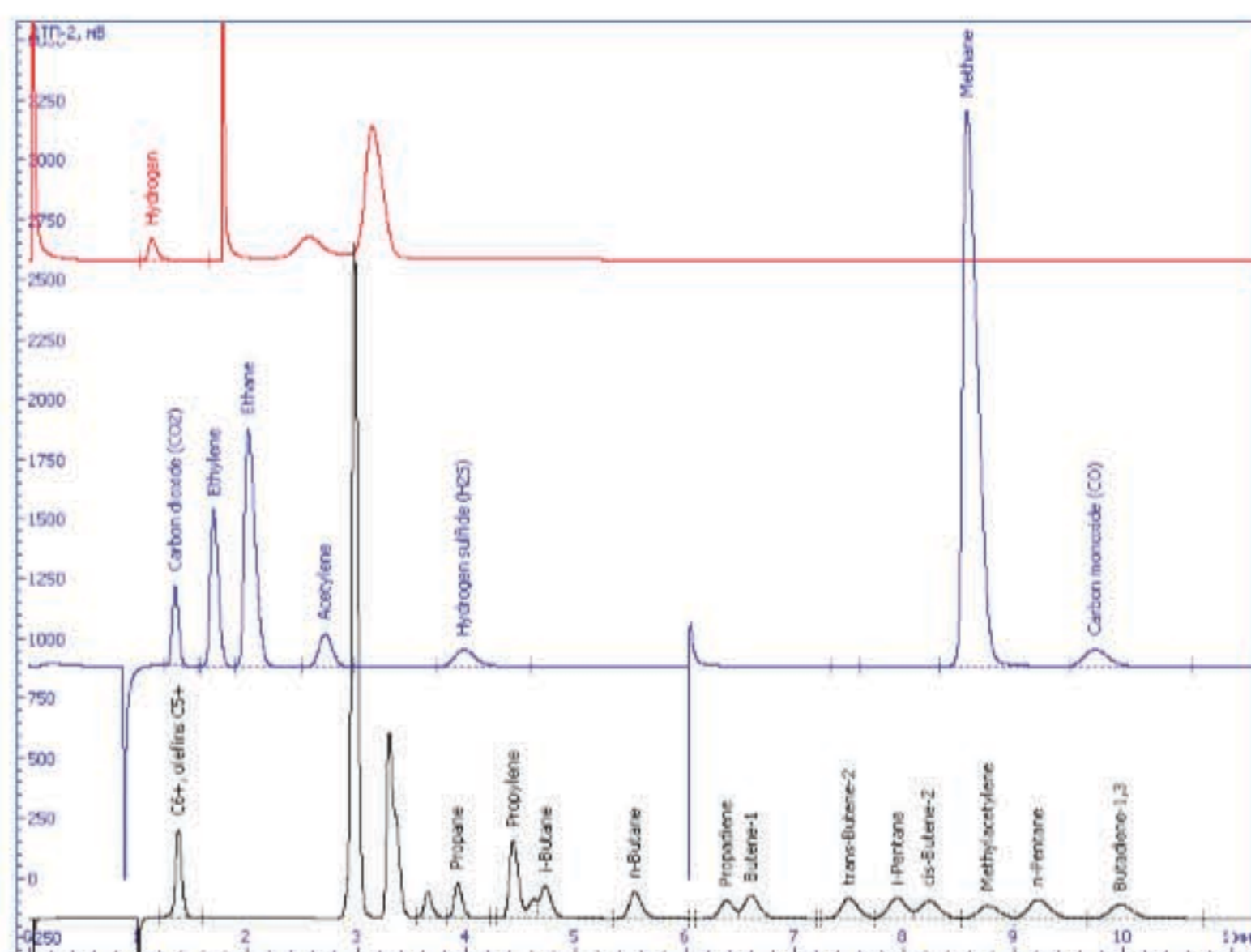
UOP 539

### Features:

GC equipped with 3 TCD, this allows shorten analysis time down to 20 minutes (using Helium), or 12 minutes (using Hydrogen as a carrier gas).

Instrument is suitable for determination high levels of H<sub>2</sub>S

Liquefied petroleum gas can be analyzed by this instrument. Order accessories for expansion LPG (optional)



### Instrument:

GC C9000, 2xTCD/FID, 4xValves, Packed&Capillary columns

### Sample:

Gaseous or Liquefied refinery gas and similar streams

### Analytes:

C1 – C6+, O<sub>2</sub>, N<sub>2</sub>, CO, CO<sub>2</sub>, H<sub>2</sub>, He

### Test methods:

UOP 539

### Features:

Capillary columns provide high efficiency in separation hydrocarbons; C<sub>6</sub>+ and olefins are eluted as a backflush peak.

Analysis time < 10 min

Instrument is not applicable for H<sub>2</sub>S contented samples

Liquefied petroleum gas can be analyzed by this instrument. Order accessories for expansion LPG (optional)

